

1^{ste} BLACK HILLS PRODUKSIEVEILING

WOENSDAG - 27 SEPTEMBER 2023 - 11:00

JONKERSDAM - STANDERTON



AANBOD: 25 BULLE

Gratis vervoer

DRAKENBERGER
STOET



Onder beskerming van
Drakensberger Genootskap

VOLLEDIGE VEILINGSREËLS IS BESKIKBAAR BY: WWW.BKB.CO.ZA

AFSLAERS:
BKB LIMITED
61 GRAHAMSTOWN RD, NORTHEM,
PORT ELIZABETH, 6001
BTW NR.: 4100101338
REG NR.: 1998/012435/06

NAVRAE:
CAREL DAVEL 082 331 1811
WILLE LANDMAN (EIENAAR) 083 257 85 11
JEAN VAN DER MERWE (EIENAAR) 082 719 7521
AFSLAER: BILLY LYONS 082 785 5498
BKB, STANDERTON: 017 712 2132



WWW.BKB.CO.ZA

BKB

The Trusted Home of Agriculture
Die Betroubare Tuiste van Landbou

AMPTELIKE VEILINGSKATALOGUS VIR /
OFFICIAL AUCTION CATALOGUE FOR

BLACK HILLS PRODUKSIE VEILING

STANDERTON
27 September 2023

All Pedigree- and Performance Data is as recorded on LOGIX on 31 August 2023



ANIMAL, OWNER AND PEDIGREE INFORMATION

12345

LOT 1 (M)

Breed Logo

7

SUPERBULL'S SUPERSTAR SB 200201

Herd Book	SP
Birth date	2020-01-01
Age	2y 7m
Inbreeding	1%
DNA	ABC001234

9 (& 10)

SB 110001
SUPERBULL SB 11 0100

SB 140007
SUPERBULL SB 140007 Pp(c)

Parentage	Sire	Dam
DNA	✓	11
Genomic	✓	

SB 110012 P
SUPERBULL SB 110012
Age 10 | AFC 32 | ICP 475
Calves 5 | Weaned -
Avg. WI - | Wean Mat. 80

SB 110001
SUPERBULL SB 110400

SB 140010
SUPERBULL SB 140010
Age 7 | AFC 27 | ICP 366
Calves 6 | Weaned 2
Avg. WI 89 | Wean Mat. 93
Calvings: 16-11, 17-10, 18-10,
20-03, 21-03, 22-04, 23-04

SB 060004 PcH
SUPERBULL SB 060004
Age 13 | AFC 72 | ICP 360
Calves 8 | Weaned 7
Avg. WI 105 | Wean Mat. 110

SUPERBULL BREEDERS

Town, Province 8
078 737 2855
super_bull@webmail.com

- | | | |
|--|--|--|
| <p>1. Lot Number & sex (mixed lots)</p> <p>2. Breed's logo</p> <p>3. GT - animal is genomically tested</p> <p>4. Animal Identification Number and Name</p> <p>5. Polled Status</p> <ul style="list-style-type: none"> • Celtic: PP(c)/Pp(c) - polled, HH(c) - horned • Phenotypic: P/PcH - polled, HH - horned, SC - scurs <p>6. Animal's photo, or Herd's logo</p> <p>7. Herd's logo</p> <p>8. Owner's information</p> | <p>9. Animal's information</p> <ul style="list-style-type: none"> • Herd book section • Birth date • Animal's age • Animal's inbreeding percentage • DNA Number - if available <p>10. Additional information (only females)</p> <ul style="list-style-type: none"> • Age at first calving • Number of calves born • Number of calves weaned • Average Wean Index • Intercalving Period | <p>11. Parentage Verification - a green tick (✓) indicates that the sire and/or dam has been verified via microsatellite (DNA) and/or Genomic testing</p> <p>12. Dam information</p> <ul style="list-style-type: none"> • Age and Number of Calvings • Average Wean Index and Number of Calves Weaned • Age at First Calving and Intercalving Period • Cow award <p>13. Four (4) generation pedigree</p> |
|--|--|--|

QR Code
This code can be scanned with a smart device. It redirects to the animal's information on www.SABeefBulls.com where additional information for the animal is available.



Myostatin	
Q204X	Free
NT821	Carrier
F94L	Not Tested

Myostatin Results

- Free - free from double muscling genes
- Carrier - heterozygotic / carrier of one double muscling gene
- D. Muscled - homozygotic / double muscled

GENETIC VALUES - BUILDING BLOCKS

Calf and Mother				Fertility				Post-Wean Growth			Frame			Carcass		
Birth Dir.	Birth Mat.	Wean Dir.	Wean Mat.	Scr. Circ.	Heifer Fert.	Cow Fert.	Longev.	Post Wean	ADG	FCR	Mature Weight	Height	Length	EMA	Fat	Mar
83	121	130	89	112	84	101	112	125	126	129	113	104	115	149	82	119
87%	70%	83%	70%	81%	68%	59%	69%	72%	76%	80%	65%	81%	80%	77%	74%	73%
10	11	12	13	16	14	15	17	18	19	20	21	22	23	25	26	27

The Logix Selection Values are compiled of specific genetic building blocks, as indicated in the selection value descriptions on the next page. These genetic building blocks are indicated in the catalogue by their Breeding Value indices and accuracies.

PHENOTYPIC VALUES

Birth Weight	205D Weight	365D Weight	540D Weight	ADG Index	FCR Index	Scrotum	LH
47kg	239kg 109 (19)	284kg 99 (10)	390kg 92 (10)	1680g/d 90 (13)	6.08 98	353mm (D1)	1.20
10	12			19	20	16	24

- 205D, 365D, 540D weights - adjusted weaning, year and 18 month weights, the phenotypic index obtained, and the number of animals in the contemporary group
- ADG and FCR Indices - phenotypic index obtained within the animal's contemporary group
- Scrotum - adjusted scrotal circumference, in mm, as measured at the end of the growth test, as well as the growth test type
- Length-Height Ratio (LH) - the animal's length to height ratio, as measured at the end of the growth test

LOGIX SELECTION VALUES

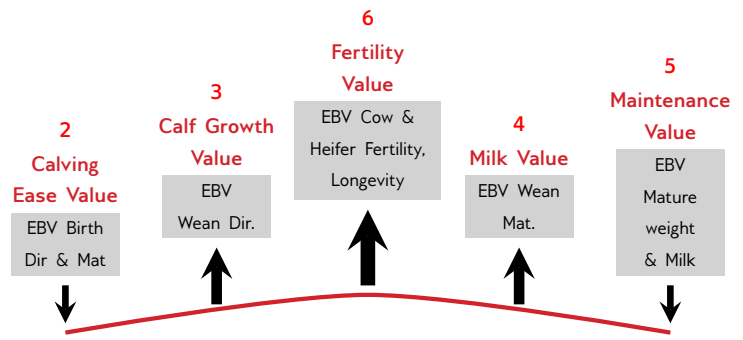
COW VALUE 108	
103	Calving Ease Value
118	Calf Growth Value
86	Milk Value
80	Maintenance Value
110	Fertility Value
GROWTH VALUE 105	
CARCASS VALUE 110	
PRODUCTION VALUE 103	



1 L♀ GIX Cow Value

Selection for:

- Fertile cows,
- with low maintenance,
- that calf easily,
- and wean heavy calves



7 L♀ GIX Growth Value

Selection for efficient growers on veld & in the feedlot



8 L♀ GIX Carcass Value

Selection for higher meat yield on carcass



9 L♀ GIX Production Value

Selection for easy-care, Profitable cattle

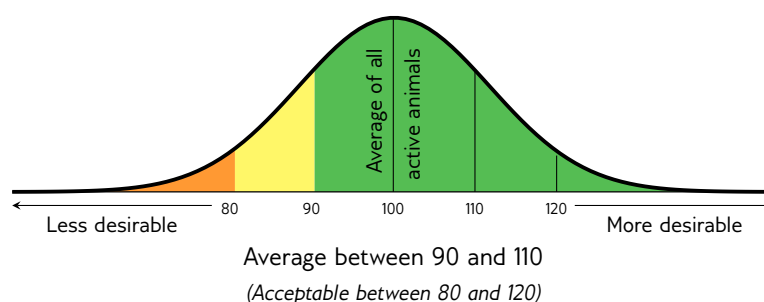
- 80% Cow Value
- 20% Growth Value

EXPLANATION OF BREEDING VALUES AND SELECTION VALUES

Traits	Description/Measurement	Goal	General Guidelines					
			<80	<90	90-110	>110	>120	
Selection Values	1 Cow Value	Combination of Calving Ease, Calf Growth, Milk, Maintenance and Fertility Values (Rand-Value)	Profitable Cow	Loss				Profit
	2 Calving Ease Value	Risk for calving problems (calf too heavy) vs calf too small	Avg. birth weight	High				Low
	3 Calf Growth Value	Calf's genetic ability for pre-weaning growth	Heavy weaner calf	Light				Heavy
	4 Milk Value	Cow's genetic mothering and milking ability	Enough milk for the calf	Less				More
	5 Maintenance Value	Maintenance requirements of cow (cow weight and milk)	Low cow maintenance	High			*	Low
	6 Fertility Value	Fertility and retention of cows and heifers	Fertile cows	Low				High
	7 Growth Value	Efficient growth on veld and in feedlot (R-value)	Profitable growth	Loss				Profit
	8 Carcass Value	Meat on carcass (Weight and RTU EBVs)	More meat on the carcass	Less				More
	9 Production Value	Combination of Cow- and Growth values (R-value)	Profitable animals	Loss				Profit
Cow & Heifer	10 Birth Weight Direct	Birth weight (Calf's genetic ability)	Avg. birth weight	Heavy				Light
	11 Birth Weight Maternal	Birth weight (Cow's genetic ability)	Easy calving	Heavy				Light
	12 Weaning Weight Direct	Weaning weight (Calf's genetic ability)	Heavy weaner calves	Light				Heavy
	13 Weaning Weight Maternal	Weaning weight (Cow's genetic ability)	Good mothers	Poor				Good
	21 Mature Cow Weight	Cow weight at weaning of first three calves	Avg. mature cow weight	Light			*	Heavy
Fertility	Cow-Calf Birth	EBV Birth Direct / EBV Mature Cow weight	Average	Low				High
	Cow-Calf Wean	EBV Wean Direct / EBV Mature Cow weight	High calf-cow ratio	Low				High
	14 Heifer Fertility	Age at first calving	Fertile heifers	Less				More
	15 Cow Fertility	First 3 inter-calving periods (ICPs)	Fertile cows	Less				More
	16 Scrotal Circumference	As measured during the growth test	Fertile bulls	Less				More
Growth & Frame	17 Longevity	Retention of progeny	Acceptable progeny	Poor				Good
	18 Post-Wean Weight	12- and 18 month weights	Good post-wean growth	Low			*	High
	19 Average Daily Gain	Average daily gain	Good growth	Poor				Good
	20 Feed Conversion Ratio	100g feed intake / g weight gain	Feed efficiency	Poor				Good
	22 Height	Shoulder / Hip height in growth test	Heavy carcass	Light			*	Heavy
	23 Length	Length in growth test	Average height	Short				Tall
	24 Length-Height Ratio	EBV Length / EBV Height	Longer for more muscle	Short <1				Long >1
Carcass	25 Eye Muscle Area	RTU measured eye muscle area	Bigger steaks	Small				Big
	26 Fat Thickness	RTU measured P8 backfat thickness	Carcass quality	Thin				Thick
	27 Marbling	RTU measured % of intra-muscular fat	Juicy meat	Low				High

* Determined by own selection goal

INTERPRETATION OF BREEDING VALUE INDICES



LOT 1 (M)



BH 200079
BLACK HILLS LEM



Herd Book	B
Birth date	2020-11-13
Age	2.9 years
Inbreeding	0%
DNA	U3111U001

BH 170062 HH
BLACK HILLS MASJEN
Wean Mat. 99

Parentage	Sire	Dam
DNA	✓	
Genomic		

BH 180085
BLACK HILLS BH 180085
Age 3y | AFC - | ICP 359d
Calves 2 | Weaned 2 | Wean Mat. 104
Avg. WI 103 | CCB 7.42 | CCW 39
Calvings: 20-11, 21-11

DBB 110029
BLYDE HOOFMAN
Wean Mat. 101

BH 100237
BLACK HILLS SL10237
Age 7y | AFC - | ICP 385d
Calves 3 | Weaned 3 | Wean Mat. 101
Avg. WI 97 | Wean Mat. 101

PU 050017
GRYSHOEK 0517
DBB 070033
BLYDE BLYDE BLOMMETJIE
Age 4y | Avg. WI 111
Calves 2 | Weaned 2

BLACK HILLS DRAKENSBERGERS

Potchefstroom, North West
0832578511
willie@blackhills.co.za
POSBUS 19792, NOORDBRUG, 2522

COW VALUE		-
115	Calving Ease Value	
81	Calf Growth Value	
-	Milk Value	
-	Maintenance Value	
-	Fertility Value	
GROWTH VALUE		-
CARCASS VALUE		89
PRODUCTION VALUE		-

Calf and Mother				Fertility				
Birth Dir.	Birth Mat.	Wean Dir.	Wean Mat.	Scr. Circ.	Heifer Fert.	Cow Fert.	Longev.	
134 67%	-	81 59%	-	63 72%	-	-	-	
Post-Wean Growth			Frame			Carcass		
Post Wean	ADG	FCR	Mature Weight	Height	Length	EMA	Fat	Mar
83 41%	94 61%	-	-	88 73%	82 70%	94 64%	88 57%	51 56%



Myostatin	
Q204X	Not Tested
NT821	Free
F94L	Not Tested

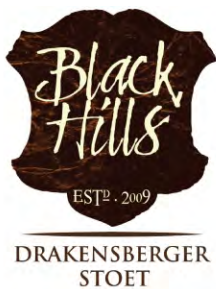
Birth Weight	205D Weight	365D Weight	540D Weight	ADG Index	FCR Index	Scrotum	LH
24kg	194kg 106 (2)	-	-	1655g/d 98 (21)	-	290mm (D2)	1.17

SELLER REMARKS: Puik nek, skof en skouer ontwikkeling. Besondere vel en haar. Manlik met breë rug. Moer het OEK van 25 maande en TKP van 359/2, Ouma het TKP van 385/2. Goeie geboorte, melk en groei teelwaarde.

LOT 2 (M)



BH 200021 HH
BLACK HILLS DUBBEL II



Herd Book	SP
Birth date	2020-09-11
Age	3 years
Inbreeding	0%
DNA	WS025249

BH 170027 HH
BLACK HILLS ANKER
Wean Mat. 104

Parentage	Sire	Dam
DNA	✓	✓
Genomic	✓	

BH 160092
BLACK HILLS DINA 2
Age 5y | AFC 33m | ICP 380d
Calves 3 | Weaned 3 | Wean Mat. 101
Avg. WI 97 | CCB 7.25 | CCW 39.5
Calvings: 19-08, 20-09, 21-09

HN 130186 HH
HYMGERT VV13186
Wean Mat. 96

BH 140402
BLACK HILLS ASTER A1
Age 9y | AFC 36m | ICP 380d
Calves 6 | Weaned 6 | Wean Mat. 110
Avg. WI 97 | Wean Mat. 110

DBB 110029
BLYDE HOOFMAN
Wean Mat. 101

BH 100001
BLACK HILLS SL1001
Age 7y | AFC - | ICP 353d
Calves 3 | Weaned 3 | Wean Mat. 105
Avg. WI 99 | Wean Mat. 105

F 100015
FRELON X1015
HN 070116
HYMGERT VV 07116
Age 6y | Avg. WI 96
Calves 4 | Weaned 4
BH 110112
BLACK HILLS BISMARCK 2
BH 110120
BLACK HILLS ASTER 1
Age 12y | Avg. WI 102
Calves 9 | Weaned 9
PU 050017
GRYSHOEK 0517
DBB 070033
BLYDE BLYDE BLOMMETJIE
Age 4y | Avg. WI 111
Calves 2 | Weaned 2

BLACK HILLS DRAKENSBERGERS

Potchefstroom, North West
0832578511
willie@blackhills.co.za
POSBUS 19792, NOORDBRUG, 2522

COW VALUE		99
117	Calving Ease Value	
89	Calf Growth Value	
101	Milk Value	
98	Maintenance Value	
108	Fertility Value	
GROWTH VALUE		82
CARCASS VALUE		87
PRODUCTION VALUE		94

Calf and Mother				Fertility				
Birth Dir.	Birth Mat.	Wean Dir.	Wean Mat.	Scr. Circ.	Heifer Fert.	Cow Fert.	Longev.	
110 75%	113 52%	89 73%	101 54%	95 75%	111 43%	-	104 48%	
Post-Wean Growth			Frame			Carcass		
Post Wean	ADG	FCR	Mature Weight	Height	Length	EMA	Fat	Mar
89 60%	83 67%	-	100 42%	59 76%	69 74%	102 69%	69 64%	79 63%



Myostatin	
Q204X	Free
NT821	Carrier
F94L	Free

Birth Weight	205D Weight	365D Weight	540D Weight	ADG Index	FCR Index	Scrotum	LH
36kg	202kg 92 (18)	-	-	1750g/d 99 (24)	-	342mm (D2)	1.19

SELLER REMARKS: Breë, diep en manlike bul van voor tot agter. Sterk agterkwart met vol binne en buite dye. Moer het TKP van 380/3, Oumas het TKP van 380/6 en 353/3. Self in kudde gebruik.



LOT 3 (M)



BH 200033 HH
BLACK HILLS SUPER V



Kuddeboek	SP
Geb. dtm	2020-09-23
Oud.	3 jaar
Inteling	1%
DNS	WS025536

BLACK HILLS DRAKENSBERGERS

Potchefstroom, North
West
0832578511
willie@blackhills.co.za
POSBUS 19792, NOORDBRUG, 2522



Miostatien	
Q204X	Skoon
NT821	Skoon
F94L	Skoon

KOEIWAARDE 104

105	Kalfgemak Waarde
108	Kalfgroei Waarde
97	Melk Waarde
-	Onderhoudswaarde
105	Vrugbaarheidswaarde

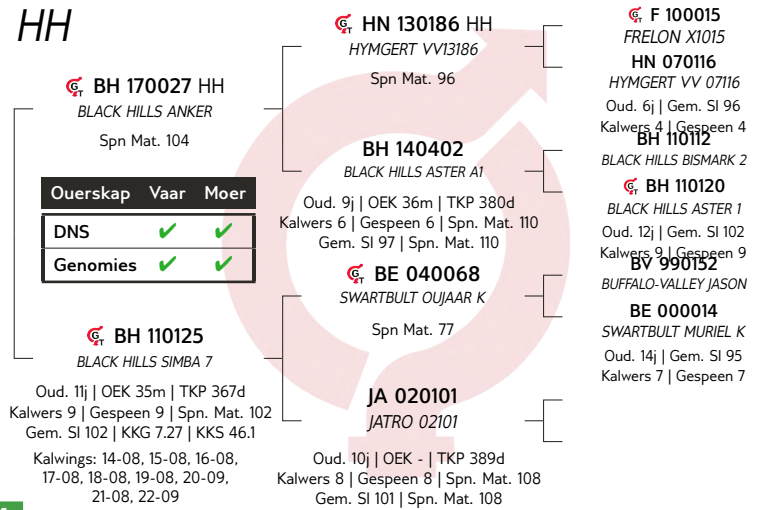
GROEI WAARDE 90

KARKAS WAARDE 98

PRODUKSIE WAARDE 100

Geb. Gewig	205D Gewig	365D Gewig	540D Gewig	GDT Indeks	VOV Indeks	Skrotum	LH
37kg	237kg 111 (18)	-	-	1762g/d 93 (21)	-	359mm (D2)	1.21

VERKOPER OPMERKINGS: Breë, gladde haar bul met baie kapasiteit en goeie balans, vleis eienskappe en lengte. Uit besondere vrugbare moeder lyne. Moer het TKP van 367/9, Oumas het TKP van 380/6 en 389/8. In die kudde gebruik.



Kalf en Moeder				Vrugbaarheid			
Geb. Dir.	Geb. Mat.	Spn. Dir.	Spn. Mat.	Skr. Omtr.	Vers Vrugb.	Koei Vrugb.	Lanklew.
105	99	108	97	110	98	-	109
76%	54%	74%	56%	75%	41%	-	47%

Na-Speen Groei			Raam			Karkas		
Na-Speen	GDT	VOV	Volw. Gewig	Hoogte	Lengte	OSO	Vet	Mar
103	88	-	-	81	92	139	53	101
61%	67%	-	-	77%	74%	68%	63%	62%

LOT 4 (M)



BH 200082
BLACK HILLS KARWATS IV



Kuddeboek	SP
Geb. dtm	2020-11-08
Oud.	2.9 jaar
Inteling	1%
DNS	U2823U078

BLACK HILLS DRAKENSBERGERS

Potchefstroom, North
West
0832578511
willie@blackhills.co.za
POSBUS 19792, NOORDBRUG, 2522



Miostatien	
Q204X	Nie Getoets
NT821	Skoon
F94L	Nie Getoets

KOEIWAARDE 92

127	Kalfgemak Waarde
90	Kalfgroei Waarde
98	Melk Waarde
-	Onderhoudswaarde
86	Vrugbaarheidswaarde

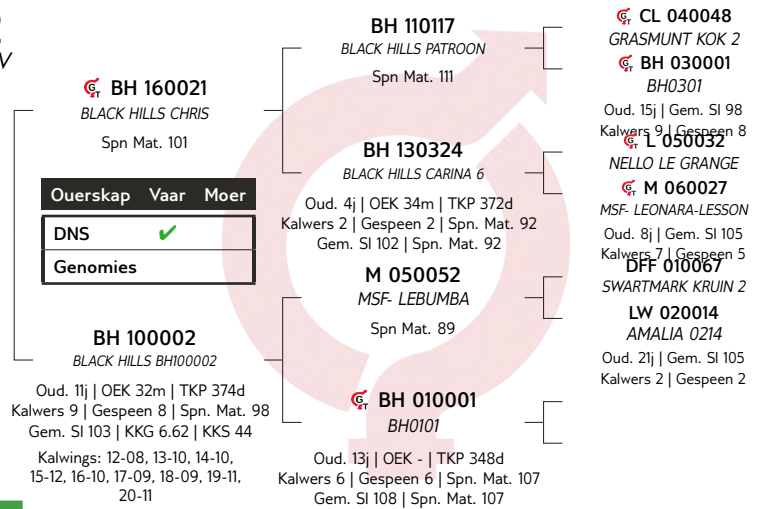
GROEI WAARDE 86

KARKAS WAARDE 95

PRODUKSIE WAARDE 89

Geb. Gewig	205D Gewig	365D Gewig	540D Gewig	GDT Indeks	VOV Indeks	Skrotum	LH
34kg	225kg 112 (25)	-	-	1643g/d 94 (24)	-	349mm (D2)	1.03

VERKOPER OPMERKINGS: Lang, breë vleisbul met goeie balans! Skoon onderlyn met sterk rug. Moer het TKP van 374/9, Oumas het TKP van 372/2 en 348/6.



Kalf en Moeder				Vrugbaarheid			
Geb. Dir.	Geb. Mat.	Spn. Dir.	Spn. Mat.	Skr. Omtr.	Vers Vrugb.	Koei Vrugb.	Lanklew.
119	116	90	98	109	-	-	83
76%	56%	73%	53%	75%	-	-	46%

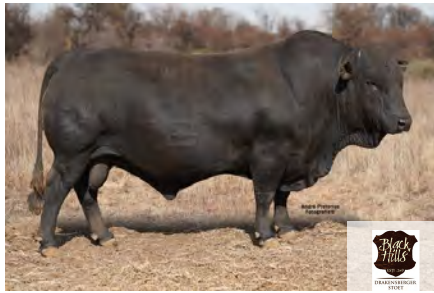
Na-Speen Groei			Raam			Karkas		
Na-Speen	GDT	VOV	Volw. Gewig	Hoogte	Lengte	OSO	Vet	Mar
91	92	-	-	80	63	101	81	116
58%	67%	-	-	77%	74%	68%	63%	62%

LOT 5 (M)



BH 190045 HH

BLACK HILLS ANKER IV



Herd Book	SP
Birth date	2019-09-28
Age	4 years
Inbreeding	0%
DNA	WS021144

GR 130070 HH
ROUVUS GR 130070
Wean Mat. 70

Parentage	Sire	Dam
DNA	✓	✓
Genomic	✓	✓

BH 11020
BLACK HILLS ASTER 1
Age 12y | AFC 35m | ICP 370d
Calves 9 | Weaned 9 | Wean Mat. 107
Avg. WI 102 | CCB 7.86 | CCW 51.6
Calvings: 14-09, 15-09, 16-10, 17-09, 18-09, 19-09, 20-11, 21-10, 22-10

GR 100221 HH
ROUVUS KRUIS 4
Wean Mat. 130

GR 100060
ROUVUS NOR 1
Age 12y | AFC 36m | ICP 370d
Calves 10 | Weaned 9 | Wean Mat. 50
Avg. WI 84 | Wean Mat. 50

JA 080014
JATRO JA080014
Wean Mat. 109

BH 020001
BH020001
Age 14y | AFC - | ICP 381d
Calves 6 | Weaned 6 | Wean Mat. 85
Avg. WI 95 | Wean Mat. 85

GR 070086
ROUVUS WATIE 3
GR 060606
ROUVUS JOVALIE 2
Age 12y | Avg. WI 102
Calves 10 | Weaned 11
GR 070077
ROUVUS SWARTKOP 7
GR 070740 HH
ROUVUS NORA 4
Age 11y | Avg. WI 89
Calves 8 | Weaned 7
F 040084
FRELON BI 04 0084
JA 010068
JATRO 01 68
Age 10y | Avg. WI 93
Calves 8 | Weaned 8

BLACK HILLS DRAKENSBERGERS

Potchefstroom, North

West
0832578511

willie@blackhills.co.za

POSBUS 19792, NOORDBRUG, 2522



USED IN HERD (8)

COW VALUE 103

115	Calving Ease Value
106	Calf Growth Value
96	Milk Value
91	Maintenance Value
101	Fertility Value

GROWTH VALUE 130

CARCASS VALUE 121

PRODUCTION VALUE 109



Genomic Breeding Value Analysis 2023-08-19

Calf and Mother				Fertility			
Birth Dir.	Birth Mat.	Wean Dir.	Wean Mat.	Scr. Circ.	Heifer Fert.	Cow Fert.	Longev.
115	100	106	96	131	94	-	118
84%	58%	81%	61%	76%	46%	-	54%

Post-Wean Growth			Frame			Carcass		
Post Wean	ADG	FCR	Mature Weight	Height	Length	EMA	Fat	Mar
112	138	135	109	125	123	112	118	120
60%	68%	41%	42%	77%	74%	69%	64%	63%

Birth Weight	205D Weight	365D Weight	540D Weight	ADG Index	FCR Index	Scrotum	LH
33kg	237kg 104 (8)	-	-	1833g/d 117 (15)	-	385mm (D2)	1.20

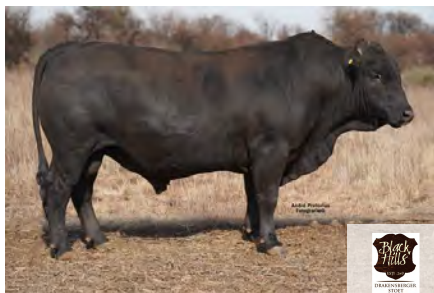
SELLER REMARKS: Stoetbul in eie kudde gebruik. Sterk manlike bul met uitstekende balans in lengte, breedte, diepte en kapasiteit. Moer het TKP van 370/9, Oumas het TKP van 371/9 en 382/6. Unieke kombinasie van kurwe-knacker teelwaardes, bouvorm en goeie vel en haar.

LOT 6 (M)



BH 200012

BLACK HILLS PROTON IV



Herd Book	B
Birth date	2020-09-10
Age	3 years
Inbreeding	0%
DNA	U2823U012

BH 160021
BLACK HILLS CHRIS
Wean Mat. 101

Parentage	Sire	Dam
DNA	✓	
Genomic		

BH 120018
BLACK HILLS 1218
Age 11y | AFC - | ICP 367d
Calves 8 | Weaned 7 | Wean Mat. 128
Avg. WI 106 | CCB 6.73 | CCW 38
Calvings: 15-09, 16-09, 17-09, 18-09, 19-10, 20-09, 21-09, 22-09

BH 11017
BLACK HILLS PATROON
Wean Mat. 111

BH 130324
BLACK HILLS CARINA 6
Age 4y | AFC 34m | ICP 372d
Calves 2 | Weaned 2 | Wean Mat. 92
Avg. WI 102 | Wean Mat. 92

CL 040048
GRAMMUNT KOK 2
BH 030001
BH0301
Age 15y | Avg. WI 98
Calves 9 | Weaned 8
L 050032
NELLO LE GRANGE
M 060027
MSF-LEONARA-LESSON
Age 8y | Avg. WI 105
Calves 7 | Weaned 5

BLACK HILLS DRAKENSBERGERS

Potchefstroom, North

West
0832578511

willie@blackhills.co.za

POSBUS 19792, NOORDBRUG, 2522



USED IN HERD (8)

COW VALUE 87

90	Calving Ease Value
93	Calf Growth Value
115	Milk Value
-	Maintenance Value
94	Fertility Value

GROWTH VALUE 90

CARCASS VALUE 101

PRODUCTION VALUE 86



EBV Analysis 2023-08-19

Calf and Mother				Fertility			
Birth Dir.	Birth Mat.	Wean Dir.	Wean Mat.	Scr. Circ.	Heifer Fert.	Cow Fert.	Longev.
100	81	93	115	108	-	-	89
60%	53%	56%	49%	74%	-	-	43%

Post-Wean Growth			Frame			Carcass		
Post Wean	ADG	FCR	Mature Weight	Height	Length	EMA	Fat	Mar
93	91	-	-	88	95	101	107	144
54%	66%	-	-	76%	73%	68%	63%	61%

Birth Weight	205D Weight	365D Weight	540D Weight	ADG Index	FCR Index	Scrotum	LH
38kg	178kg 100 (1)	-	-	1738g/d 92 (21)	-	352mm (D2)	1.21

SELLER REMARKS: Breë en diep bul met lengte - hoogte verhouding van 1.21. Een van 'n tweeling. Moer het TKP van 367/9, Ouma het TKP van 372/2. Bul het goeie geboorte, melk, lengte, skrotum en ouderdom eerste kalf teelwaardes. In kommersiële kudde gebruik.

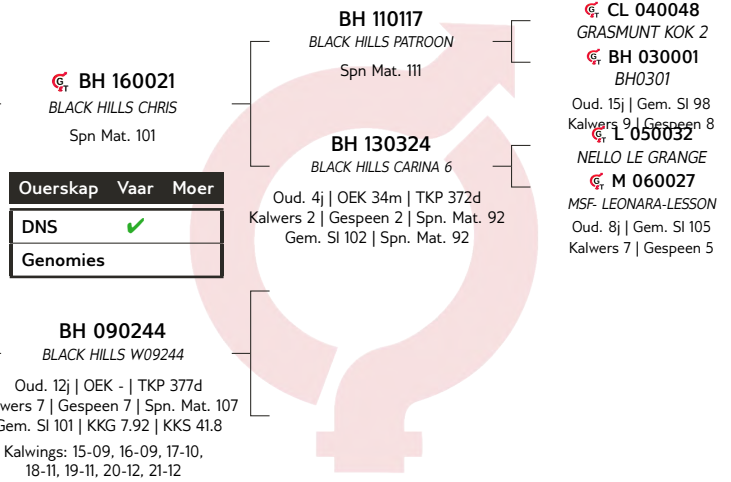
LOT 7 (M)



BH 200110
 BLACK HILLS SEKELBOS III



Kuddeboek	B
Geb. dtm	2020-12-03
Oud.	2.8 jaar
Inteling	0%
DNS	U3111U021



BLACK HILLS DRAKENSBERGERS

Potchefstroom, North West
 0832578511
 willie@blackhills.co.za
 POSBUS 19792, NOORDBRUG, 2522

KOEIWAARDE	90
100	Kalfgemak Waarde
94	Kalfgroei Waarde
105	Melk Waarde
-	Onderhoudswaarde
89	Vrugbaarheidswaarde
GROEI WAARDE	104
KARKAS WAARDE	97
PRODUKSIE WAARDE	92

Kalf en Moeder				Vrugbaarheid			
Geb. Dir.	Geb. Mat.	Spn. Dir.	Spn. Mat.	Skr. Omtr.	Vers Vrugb.	Koei Vrugb.	Lanklew.
100	98	94	105	144	-	-	91
74%	53%	71%	51%	74%			42%

Na-Speen Groei			Raam			Karkas		
Na-Speen	GDT	VOV	Volw. Gewig	Hoogte	Lengte	OSO	Vet	Mar
95	101	-	-	106	109	104	53	119
54%	66%			76%	73%	68%	63%	62%

Geb. Gewig	205D Gewig	365D Gewig	540D Gewig	GDT Indeks	VOV Indeks	Skrotum	LH
39kg	219kg 106 (25)	-	-	1738g/d 103 (24)	-	374mm (D2)	1.21



Miostatien	
Q204X	Nie Getoets
NT821	Skoon
F94L	Nie Getoets

VERKOPER OPMERKINGS: Lang bul vol vleis met goeie breedte en sterk rug. Bul met L:H van 1.21. Moer het TKP van 377/7, Ouma het TKP van 372/2. Baie goeie teelwaardes.

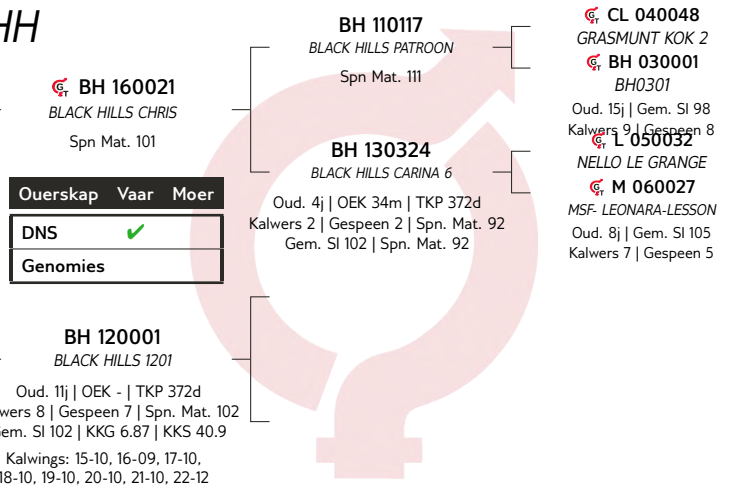
LOT 8 (M)



BH 200042 HH
 BLACK HILLS MANTEL III



Kuddeboek	B
Geb. dtm	2020-10-02
Oud.	3 jaar
Inteling	0%
DNS	U2823U040



BLACK HILLS DRAKENSBERGERS

Potchefstroom, North West
 0832578511
 willie@blackhills.co.za
 POSBUS 19792, NOORDBRUG, 2522

KOEIWAARDE	88
110	Kalfgemak Waarde
88	Kalfgroei Waarde
99	Melk Waarde
115	Onderhoudswaarde
83	Vrugbaarheidswaarde
GROEI WAARDE	82
KARKAS WAARDE	87
PRODUKSIE WAARDE	85

Kalf en Moeder				Vrugbaarheid			
Geb. Dir.	Geb. Mat.	Spn. Dir.	Spn. Mat.	Skr. Omtr.	Vers Vrugb.	Koei Vrugb.	Lanklew.
105	108	88	99	111	91	86	89
78%	65%	75%	63%	78%	54%	51%	59%

Na-Speen Groei			Raam			Karkas		
Na-Speen	GDT	VOV	Volw. Gewig	Hoogte	Lengte	OSO	Vet	Mar
86	77	72	87	82	92	98	83	111
66%	72%	50%	52%	79%	77%	73%	70%	69%

Geb. Gewig	205D Gewig	365D Gewig	540D Gewig	GDT Indeks	VOV Indeks	Skrotum	LH
37kg	213kg 103 (25)	-	-	1595g/d 90 (24)	-	355mm (D2)	1.21



Miostatien	
Q204X	Skoon
NT821	Skoon
F94L	Skoon

VERKOPER OPMERKINGS: Lang bul met besondere bespierung op die rug en agterkwart. Goeie vel en haar. Moer het TKP van 372/8, Ouma het TKP van 372/2. Bul met lengte hoogte verhouding van 1.21.

LOT 9 (M)



BH 190063 HH

BLACK HILLS POTYSTER



Herd Book	SP
Birth date	2019-10-17
Age	4 years
Inbreeding	4%
DNA	WS021148

BH 160078 HH
BLACK HILLS RAMKAT II
Wean Mat. 110

Parentage	Sire	Dam
DNA	✓	✓
Genomic	✓	✓

BH 150037 HH
BLACK HILLS PINKIE I

Age 8y | AFC 36m | ICP 378d
Calves 5 | Weaned 4 | Wean Mat. 119
Avg. WI 101 | CCB 7.82 | CCW 41.3

Calvings: 18-09, 19-10, 20-10, 21-10, 22-10

BH 130313
BLACK HILLS BISMARCK IV
Wean Mat. 109

BH 100224
BLACK HILLS SL1024
Age 6y | AFC - | ICP 413d
Calves 2 | Weaned 2 | Wean Mat. 128
Avg. WI 115 | Wean Mat. 128

BH 110117
BLACK HILLS PATROON
Wean Mat. 111

BH 120018
BLACK HILLS 1218
Age 11y | AFC - | ICP 367d
Calves 8 | Weaned 7 | Wean Mat. 128
Avg. WI 106 | Wean Mat. 128

CL 040048
GRASMUNT KOK 2
CL 040051
GRASMUNT RIETA 3
Age 14y | Avg. WI 99
Calves 11 | Weaned 9

CL 040048
GRASMUNT KOK 2
BH 030001
BH0301
Age 15y | Avg. WI 98
Calves 9 | Weaned 8

BLACK HILLS DRAKENSBERGERS

Potchefstroom, North

West
0832578511

willie@blackhills.co.za

POSBUS 19792, NOORDBRUG, 2522

USED IN HERD (9)



Myostatin	
Q204X	Free
NT821	Free
F94L	Free

COW VALUE 102

77	Calving Ease Value
116	Calf Growth Value
113	Milk Value
-	Maintenance Value
91	Fertility Value

GROWTH VALUE 130

CARCASS VALUE 128

PRODUCTION VALUE 108

Birth Weight	205D Weight	365D Weight	540D Weight	ADG Index	FCR Index	Scrotum	LH
38kg	227kg 104 (6)	-	-	1798g/d 115 (15)	-	370mm (D2)	1.20



Calf and Mother				Fertility			
Birth Dir.	Birth Mat.	Wean Dir.	Wean Mat.	Scr. Circ.	Heifer Fert.	Cow Fert.	Longev.
90	71	116	113	136	-	-	119
83%	46%	80%	49%	76%	-	-	46%

Post-Wean Growth			Frame			Carcass		
Post Wean	ADG	FCR	Mature Weight	Height	Length	EMA	Fat	Mar
118	134	-	-	130	127	105	95	97
54%	67%	-	-	78%	75%	70%	64%	62%

SELLER REMARKS: Besonderse lengte en breedte reg deur. Goeie sekondêre manlike eienskappe, veral die nek skof en skouer ontwikkeling en wakker oë. Lang heup na sitbeen. Moer het TKP van 378/5, Ouma het TKP van 369/9. Baie goeie speen, melk, GDT, lengte en skrotum teelwaardes. Bul self in kudde gebruik.

LOT 10 (M)



BH 200067 HH

BLACK HILLS MAJOOR



DRAKENSBERGER
STOET

BLACK HILLS DRAKENSBERGERS

Potchefstroom, North

West
0832578511

willie@blackhills.co.za

POSBUS 19792, NOORDBRUG, 2522



Myostatin	
Q204X	Free
NT821	Free
F94L	Free

COW VALUE 105

105	Calving Ease Value
96	Calf Growth Value
105	Milk Value
122	Maintenance Value
86	Fertility Value

GROWTH VALUE 103

CARCASS VALUE 99

PRODUCTION VALUE 104

Birth Weight	205D Weight	365D Weight	540D Weight	ADG Index	FCR Index	Scrotum	LH
39kg	216kg 98 (18)	-	-	1714g/d 98 (24)	-	358mm (D2)	1.20

BH 170027 HH
BLACK HILLS ANKER
Wean Mat. 104

Parentage	Sire	Dam
DNA	✓	✓
Genomic	✓	✓

BH 160046
BLACK HILLS MANTROEKIE 2

Age 4y | AFC 36m | ICP 405d
Calves 2 | Weaned 1 | Wean Mat. 106
Avg. WI 98 | CCB 8.67 | CCW 44.6

Calvings: 19-09, 20-10

HN 130186 HH
HYMGERT VV13186
Wean Mat. 96

BH 140402
BLACK HILLS ASTER A1
Age 9y | AFC 36m | ICP 380d
Calves 6 | Weaned 6 | Wean Mat. 110
Avg. WI 97 | Wean Mat. 110

BH 110112
BLACK HILLS BISMARCK 2
Wean Mat. 108

BH 120001
BLACK HILLS 1201
Age 11y | AFC - | ICP 372d
Calves 8 | Weaned 7 | Wean Mat. 102
Avg. WI 102 | Wean Mat. 102

F 100015
FRELON X1015
HN 070116
HYMGERT VV 07116
Age 6y | Avg. WI 96
Calves 4 | Weaned 4

BH 110112
BLACK HILLS BISMARCK 2
BH 110120
BLACK HILLS ASTER 1
Age 12y | Avg. WI 102
Calves 9 | Weaned 9
CL 040048
GRASMUNT KOK 2
CL 040051
GRASMUNT RIETA 3
Age 14y | Avg. WI 99
Calves 11 | Weaned 9



Calf and Mother				Fertility			
Birth Dir.	Birth Mat.	Wean Dir.	Wean Mat.	Scr. Circ.	Heifer Fert.	Cow Fert.	Longev.
105	100	96	105	122	89	82	106
77%	59%	75%	60%	77%	54%	49%	57%

Post-Wean Growth			Frame			Carcass		
Post Wean	ADG	FCR	Mature Weight	Height	Length	EMA	Fat	Mar
96	101	90	80	108	116	111	81	81
66%	71%	48%	52%	78%	76%	72%	69%	68%

SELLER REMARKS: Lang bul met baie kapasiteit, breedte en vol agterkwart. Baie goeie balans vir die vleisbul. Oumas het TKP van 380/6 en 372/8. Baie goeie teelwaardes. Bul self in die kudde gebruik.

LOT 11 (M)



BH 200031 HH

BLACK HILLS BH 200031



Kuddeboek	A
Geb. dtm	2020-09-22
Oud.	3 jaar
Inteling	0%
DNS	WS025253

BH 170027 HH
BLACK HILLS ANKER
Spn Mat. 104

Ouerskap	Vaar	Moer
DNS		
Genomies	✓	

HN 130186 HH
HYMGERT VV13186
Spn Mat. 96

BH 140402
BLACK HILLS ASTER A1
Oud. 9j | OEK 36m | TKP 380d
Kalwers 6 | Gespeen 6 | Spn. Mat. 110
Gem. SI 97 | Spn. Mat. 110

F 100015
FRELON X1015
HN 070116
HYMGERT VV 07116
Oud. 6j | Gem. SI 96
Kalwers 4 | Gespeen 4
BH 110112
BLACK HILLS BISMARCK 2

BH 110120
BLACK HILLS ASTER 1
Oud. 12j | Gem. SI 102
Kalwers 9 | Gespeen 9

BLACK HILLS DRAKENSBERGERS



Potchefstroom, North West
0832578511
willie@blackhills.co.za

POSBUS 19792, NOORDBRUG, 2522

KOEIWAARDE	95
107	Kalfgemak Waarde
90	Kalfgroei Waarde
106	Melk Waarde
113	Onderhoudswaarde
86	Vrugbaarheidswaarde
GROEI WAARDE	96
KARKAS WAARDE	95
PRODUKSIE WAARDE	94



Kalf en Moeder				Vrugbaarheid			
Geb. Dir.	Geb. Mat.	Spn. Dir.	Spn. Mat.	Skr. Omtr.	Vers Vrugb.	Koei Vrugb.	Lanklew.
105	105	90	106	107	91	85	98
62%	56%	62%	56%	60%	53%	52%	56%

Na-Speen Groei			Raam			Karkas		
Na-Speen	GDT	VOV	Volw. Gewig	Hoogte	Lengte	OSO	Vet	Mar
90	98	95	89	96	95	107	68	87
59%	59%	51%	53%	61%	60%	60%	59%	59%

Geb. Gewig	205D Gewig	365D Gewig	540D Gewig	GDT Indeks	VOV Indeks	Skrotum	LH
-	-	-	-	1679g/d 95 (24)	-	372mm (D2)	1.18



Miostatien	
Q204X	Skoon
NT821	Skoon
F94L	Skoon

VERKOPER OPMERKINGS: Lang bul met uitstekende vel en haar met breë sterk rug. Goeie vleis eienskappe. Ouma het TKP van 380/6. Bul met goeie geboorte, melk, groei en skrotum omtrek teelwaardes.

LOT 13 (M)



BH 200047

BLACK HILLS PUMA



Kuddeboek	SP
Geb. dtm	2020-10-07
Oud.	3 jaar
Inteling	1%
DNS	U2823U045

BH 170083 Pch
BLACK HILLS JOULE
Spn Mat. 105

Ouerskap	Vaar	Moer
DNS	✓	✓
Genomies		

BH 140401
BLACK HILLS SUPER
Spn Mat. 105

BH 150053
BLACK HILLS JASMYN 1
Oud. 8j | OEK 25m | TKP 338d
Kalwers 6 | Gespeen 5 | Spn. Mat. 101
Gem. SI 101 | Spn. Mat. 101

HN 130186 HH
HYMGERT VV13186
Spn Mat. 96

BH 140432
BLACK HILLS POPPIE 5
Oud. 3j | OEK 35m | TKP -
Kalwers 1 | Gespeen 1 | Spn. Mat. 102
Gem. SI 108 | Spn. Mat. 102

BH 110112
BLACK HILLS BISMARCK 2

BH 110125
BLACK HILLS SIMBA 7
Oud. 11j | Gem. SI 102
Kalwers 9 | Gespeen 9

BF 110011
BLACK FOX 11 11

BH 120007
BLACK HILLS 1207
Oud. 4j | Gem. SI 110
Kalwers 2 | Gespeen 2

F 100015
FRELON X1015
HN 070116
HYMGERT VV 07116
Oud. 6j | Gem. SI 96
Kalwers 4 | Gespeen 4

BF 090018
BLACK FOX 09 018

BH 010006
BH0106
Oud. 14j | Gem. SI 103
Kalwers 5 | Gespeen 5

BLACK HILLS DRAKENSBERGERS



Potchefstroom, North West
0832578511
willie@blackhills.co.za

POSBUS 19792, NOORDBRUG, 2522

KOEIWAARDE	103
89	Kalfgemak Waarde
117	Kalfgroei Waarde
96	Melk Waarde
-	Onderhoudswaarde
96	Vrugbaarheidswaarde
GROEI WAARDE	109
KARKAS WAARDE	112
PRODUKSIE WAARDE	104



Kalf en Moeder				Vrugbaarheid			
Geb. Dir.	Geb. Mat.	Spn. Dir.	Spn. Mat.	Skr. Omtr.	Vers Vrugb.	Koei Vrugb.	Lanklew.
89	98	117	96	122	-	-	-
73%	42%	70%	46%	73%	-	-	-

Na-Speen Groei			Raam			Karkas		
Na-Speen	GDT	VOV	Volw. Gewig	Hoogte	Lengte	OSO	Vet	Mar
116	112	-	-	117	119	125	101	85
57%	63%	-	-	75%	71%	66%	60%	58%

Geb. Gewig	205D Gewig	365D Gewig	540D Gewig	GDT Indeks	VOV Indeks	Skrotum	LH
39kg	232kg 107 (18)	-	-	1762g/d 100 (24)	-	342mm (D2)	1.17



Miostatien	
Q204X	Nie Getoets
NT821	Skoon
F94L	Nie Getoets

VERKOPER OPMERKINGS: Lang breë bul met goeie vleis eienskappe. Moer het 'n TKP van 380/3 en oma het TKP van 338/6. Bul met baie goeie teelwaardes.

LOT 14 (M)



BH 200096
BLACK HILLS KEISER III

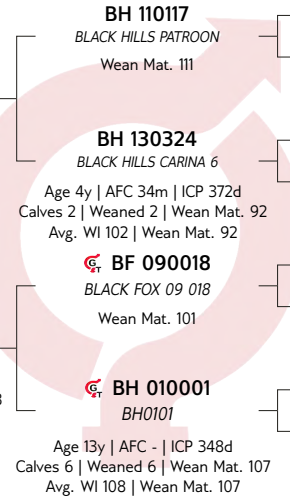


Herd Book	SP
Birth date	2020-11-19
Age	2.9 years
Inbreeding	1%
DNA	U311U011

BH 160021
BLACK HILLS CHRIS
Wean Mat. 101

Parentage	Sire	Dam
DNA	✓	✓
Genomic		

BH 130331
BLACK HILLS KLAWER 5
Age 8y | AFC 34m | ICP 378d
Calves 6 | Weaned 5 | Wean Mat. 108
Avg. WI 101 | CCB 7.79 | CCW 39.1
Calvings: 16-09, 17-10, 18-11, 19-11, 20-11, 21-11



CL 040048
GRASMUNT KOK 2
BH 030001
BH0301
Age 15y | Avg. WI 98
Calves 9 | Weaned 8
L 050032
NELLO LE GRANGE
M 060027
MSF- LEONARA-LESSON
Age 8y | Avg. WI 105
Calves 7 | Weaned 5
BV 020370
BUFFALO-VALLEY NORMAN
BF 03002A
BLACK FOX 0302 A
Age 8y | Avg. WI 99
Calves 5 | Weaned 5

BLACK HILLS DRAKENSBERGERS

Potchefstroom, North
West
0832578511
willie@blackhills.co.za
POSBUS 19792, NOORDBRUG, 2522

COW VALUE	77
97	Calving Ease Value
91	Calf Growth Value
108	Milk Value
-	Maintenance Value
74	Fertility Value
GROWTH VALUE	91
CARCASS VALUE	94
PRODUCTION VALUE	78



Calf and Mother				Fertility			
Birth Dir.	Birth Mat.	Wean Dir.	Wean Mat.	Scr. Circ.	Heifer Fert.	Cow Fert.	Longev.
106	82	91	108	108	-	-	90
76%	54%	73%	51%	75%			46%

Post-Wean Growth			Frame			Carcass		
Post Wean	ADG	FCR	Mature Weight	Height	Length	EMA	Fat	Mar
94	88	-	-	95	102	99	56	109
58%	67%			77%	74%	69%	64%	62%

Birth Weight	205D Weight	365D Weight	540D Weight	ADG Index	FCR Index	Scrotum	LH
35kg	199kg 96 (25)	-	-	1679g/d 100 (24)	-	319mm (D2)	1.19



Myostatin	
Q204X	Not Tested
NT821	Free
F94L	Not Tested

SELLER REMARKS: Lang manlike bul. Moer het TKP van 378/6, Oumas het TKP van 372/2 en 348/6. Goeie geboorte, melk, speen en skrotum teelwaarde.

LOT 15 (M)



BH 200002
BLACK HILLS ATOOM III

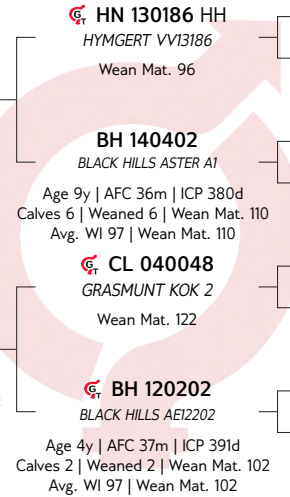


Herd Book	SP
Birth date	2020-09-03
Age	3.1 years
Inbreeding	6%
DNA	U2823U002

BH 170027 HH
BLACK HILLS ANKER
Wean Mat. 104

Parentage	Sire	Dam
DNA	✓	✓
Genomic		

BH 150005
BLACK HILLS AEI5005
Age 8y | AFC 37m | ICP 381d
Calves 5 | Weaned 5 | Wean Mat. 122
Avg. WI 104 | CCB 7.97 | CCW 45
Calvings: 18-09, 19-09, 20-09, 21-10, 22-11



F 100015
FRELON X1015
HN 070116
HYMGERT VV 07116
Age 6y | Avg. WI 96
Calves 4 | Weaned 4
BH 110112
BLACK HILLS BISMARCK 2
BH 110120
BLACK HILLS ASTER 1
Age 12y | Avg. WI 102
Calves 9 | Weaned 9
CL 010065
GRASMUNT PAKKER
CL 000018
GRASMUNT KOFFIE 2 A
Age 5y | Avg. WI 108
Calves 2 | Weaned 2
F 080020
FRELON L0820
HN 090036
HYMGERT AE0936
Age 11y | Avg. WI 105
Calves 9 | Weaned 8

BLACK HILLS DRAKENSBERGERS

Potchefstroom, North
West
0832578511
willie@blackhills.co.za
POSBUS 19792, NOORDBRUG, 2522

COW VALUE	86
120	Calving Ease Value
83	Calf Growth Value
115	Milk Value
-	Maintenance Value
74	Fertility Value
GROWTH VALUE	101
CARCASS VALUE	91
PRODUCTION VALUE	88



Calf and Mother				Fertility			
Birth Dir.	Birth Mat.	Wean Dir.	Wean Mat.	Scr. Circ.	Heifer Fert.	Cow Fert.	Longev.
123	97	83	115	122	81	-	101
75%	51%	73%	53%	75%	41%		46%

Post-Wean Growth			Frame			Carcass		
Post Wean	ADG	FCR	Mature Weight	Height	Length	EMA	Fat	Mar
85	100	-	-	88	86	98	79	105
60%	67%			76%	73%	69%	64%	62%

Birth Weight	205D Weight	365D Weight	540D Weight	ADG Index	FCR Index	Scrotum	LH
31kg	194kg 96 (25)	-	-	1857g/d 105 (24)	-	390mm (D2)	1.18



Myostatin	
Q204X	Not Tested
NT821	Free
F94L	Not Tested

SELLER REMARKS: Manlike bul met lang breë rug. Moer het TKP van 381/5, Ouma het TKP van 380/6. Lae geboorte gewig, goeie melk en groei teelwaarde asook skrotum omtrek.

LOT 16 (M)



BH 200106
BLACK HILLS STREEPSAK II



Kuddeboek	B
Geb. dtm	2020-12-01
Oud.	2.8 jaar
Inteling	0%
DNS	U3111U019

BLACK HILLS DRAKENSBERGERS



Potchefstroom, North West
0832578511
willie@blackhills.co.za

POSBUS 19792, NOORDBRUG, 2522

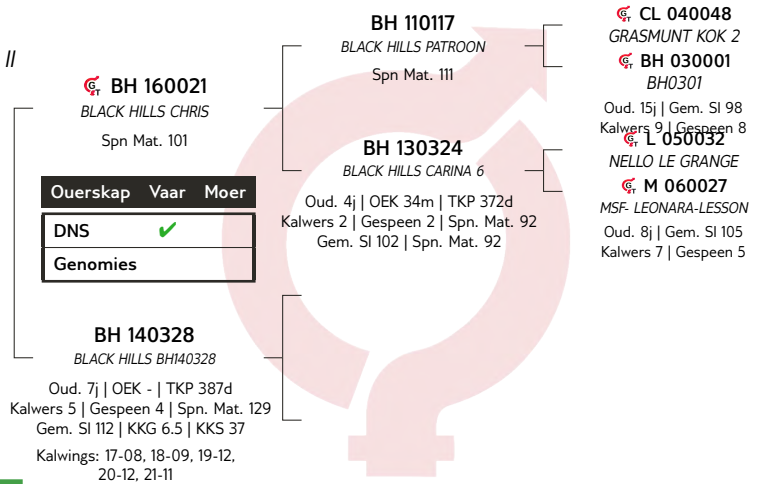


Miostatien	
Q204X	Nie Getoets
NT821	Skoon
F94L	Nie Getoets

KOEIWAARDE 98	
96	Kalfgemak Waarde
102	Kalfgroei Waarde
114	Melk Waarde
-	Onderhoudswaarde
87	Vrugbaarheidswaarde
GROEI WAARDE 109	
KARKAS WAARDE 109	
PRODUKSIE WAARDE 99	

Geb. Gewig	205D Gewig	365D Gewig	540D Gewig	GDT Indeks	VOV Indeks	Skrotum	LH
39kg	243kg 120 (25)	-	-	1893g/d 112 (24)	-	350mm (D2)	1.16

VERKOPER OPMERKINGS: Bul met goeie balans, vel en haar asook mooi manlike kop. Moer het TKP van 387/5 en Ouma met TKP van 372/2. Bul met uitsonderlike teelwaardes.



Na-Speen Groei			Raam			Karkas		
Na-Speen	GDT	VOV	Volw. Gewig	Hoogte	Lengte	OSO	Vet	Mar
104	110	-	-	106	107	106	72	144
52%	64%	-	-	75%	72%	67%	61%	60%

Kalf en Moeder				Vrugbaarheid			
Geb. Dir.	Geb. Mat.	Spn. Dir.	Spn. Mat.	Skr. Omtr.	Vers Vrugb.	Koei Vrugb.	Lanklew.
100	92	102	114	132	-	-	89
73%	51%	69%	48%	73%	-	-	40%

LOT 17 (M)



BH 200070
BLACK HILLS VOORSLAG IV



Kuddeboek	B
Geb. dtm	2020-10-27
Oud.	2.9 jaar
Inteling	0%
DNS	U2823U068

BLACK HILLS DRAKENSBERGERS



Potchefstroom, North West
0832578511
willie@blackhills.co.za

POSBUS 19792, NOORDBRUG, 2522

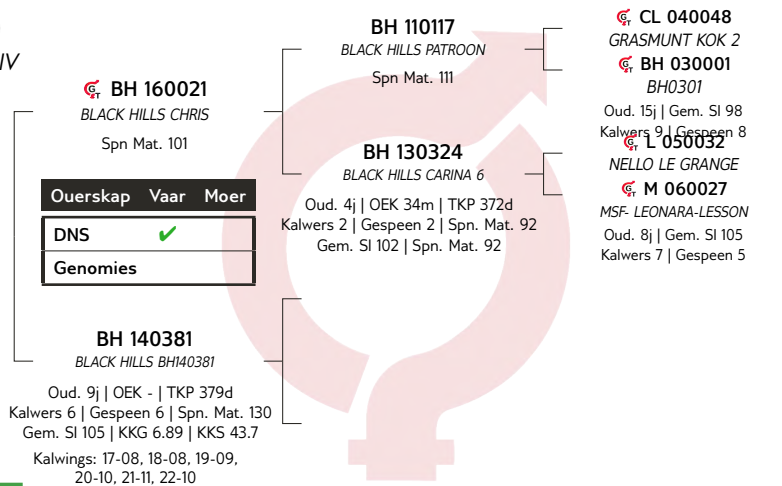


Miostatien	
Q204X	Nie Getoets
NT821	Skoon
F94L	Nie Getoets

KOEIWAARDE 90	
106	Kalfgemak Waarde
90	Kalfgroei Waarde
117	Melk Waarde
-	Onderhoudswaarde
86	Vrugbaarheidswaarde
GROEI WAARDE 98	
KARKAS WAARDE 103	
PRODUKSIE WAARDE 91	

Geb. Gewig	205D Gewig	365D Gewig	540D Gewig	GDT Indeks	VOV Indeks	Skrotum	LH
32kg	215kg 107 (25)	-	-	1786g/d 101 (24)	-	397mm (D2)	1.19

VERKOPER OPMERKINGS: Mooi balans tussen lengte en breedte met baie sterk rug en goeie agterkwart. Moer het TKP van 379/6 en Ouma met TKP van 372/2. Gebalanseerde teelwaardes.



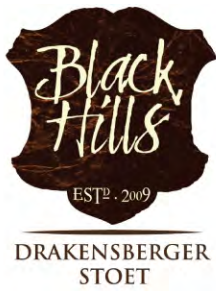
Na-Speen Groei			Raam			Karkas		
Na-Speen	GDT	VOV	Volw. Gewig	Hoogte	Lengte	OSO	Vet	Mar
94	98	-	-	94	99	101	100	120
52%	66%	-	-	76%	73%	68%	63%	62%

Kalf en Moeder				Vrugbaarheid			
Geb. Dir.	Geb. Mat.	Spn. Dir.	Spn. Mat.	Skr. Omtr.	Vers Vrugb.	Koei Vrugb.	Lanklew.
113	86	90	117	144	-	-	92
74%	52%	71%	50%	74%	-	-	41%

LOT 18 (M)



BH 200084
BLACK HILLS LEM II



ESTD. 2009
DRAKENSBERGER
STOET

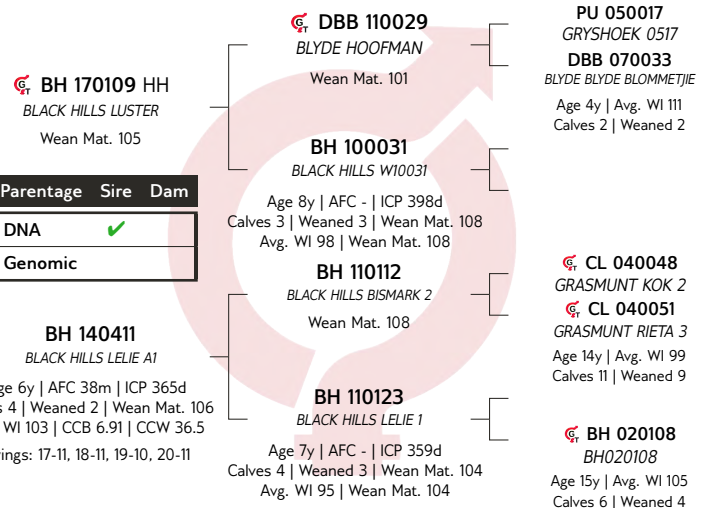
BLACK HILLS DRAKENSBERGERS

Potchefstroom, North
West
0832578511
willie@blackhills.co.za
POSBUS 19792, NOORDBRUG, 2522

Herd Book	B
Birth date	2020-11-10
Age	2.9 years
Inbreeding	0%
DNA	U2823U079

COW VALUE	94
99	Calving Ease Value
101	Calf Growth Value
105	Milk Value
-	Maintenance Value
96	Fertility Value
GROWTH VALUE	102
CARCASS VALUE	102
PRODUCTION VALUE	94

Birth Weight	205D Weight	365D Weight	540D Weight	ADG Index	FCR Index	Scrotum	LH
38kg	218kg 106 (25)	-	-	1667g/d 96 (24)	-	324mm (D2)	1.19



LOGIX
GENETICS CENTRAL
EBV Analysis 2023-08-19

Calf and Mother				Fertility			
Birth Dir.	Birth Mat.	Wean Dir.	Wean Mat.	Scr. Circ.	Heifer Fert.	Cow Fert.	Longev.
102	93	101	105	87	-	-	103
72%	45%	68%	45%	72%	-	-	42%

Post-Wean Growth			Frame			Carcass		
Post Wean	ADG	FCR	Mature Weight	Height	Length	EMA	Fat	Mar
101	100	-	-	85	94	135	74	101
52%	62%	-	-	74%	70%	65%	59%	57%



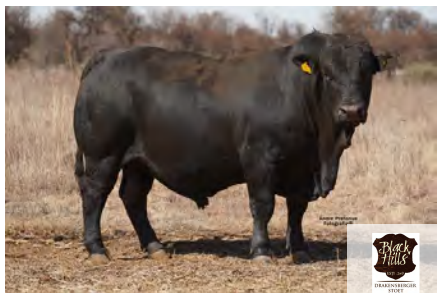
Myostatin	
Q204X	Not Tested
NT821	Carrier
F94L	Not Tested

SELLER REMARKS: Manlike bul met baie diepte en goeie binne dye. Moer het TKP van 365/4, Oumas het TKP van 359/5 en 398/3. Baie goeie teelwaardes.

LOT 19 (M)



BH 200073
BLACK HILLS DAPPER II



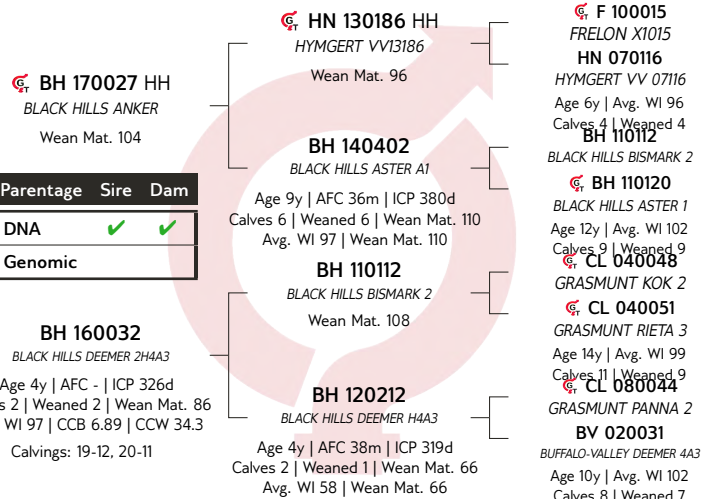
BLACK HILLS DRAKENSBERGERS

Potchefstroom, North
West
0832578511
willie@blackhills.co.za
POSBUS 19792, NOORDBRUG, 2522

Herd Book	B
Birth date	2020-11-07
Age	2.9 years
Inbreeding	9%
DNA	U2823U071

COW VALUE	97
121	Calving Ease Value
96	Calf Growth Value
96	Milk Value
-	Maintenance Value
88	Fertility Value
GROWTH VALUE	93
CARCASS VALUE	92
PRODUCTION VALUE	95

Birth Weight	205D Weight	365D Weight	540D Weight	ADG Index	FCR Index	Scrotum	LH
33kg	216kg 101 (18)	-	-	1774g/d 102 (24)	-	349mm (D2)	1.19



LOGIX
GENETICS CENTRAL
EBV Analysis 2023-08-19

Calf and Mother				Fertility			
Birth Dir.	Birth Mat.	Wean Dir.	Wean Mat.	Scr. Circ.	Heifer Fert.	Cow Fert.	Longev.
116	110	96	96	108	-	-	109
74%	48%	70%	50%	74%	-	-	44%

Post-Wean Growth			Frame			Carcass		
Post Wean	ADG	FCR	Mature Weight	Height	Length	EMA	Fat	Mar
95	94	-	-	61	77	89	70	64
57%	66%	-	-	76%	73%	68%	63%	62%



Myostatin	
Q204X	Not Tested
NT821	Free
F94L	Not Tested

SELLER REMARKS: Breë, vroegryp bul met baie kapasiteit, goeie balans en sterk agterkwart. Moer het TKP van 326/2, Oumas het TKP van 319/2 en 380/6. Baie goeie teelwaardes vir geboorte, melk, speen, groei en skrotum. In stoet kudde gebruik.

LOT 20 (M)



BH 200078
 BLACK HILLS NOVEMBER II



Kuddeboek	SP
Geb. dtm	2020-11-06
Oud.	2.9 jaar
Inteling	1%
DNS	U2823U076

BLACK HILLS DRAKENSBERGERS



Potchefstroom, North West
 0832578511
 willie@blackhills.co.za

POSBUS 19792, NOORDBRUG, 2522

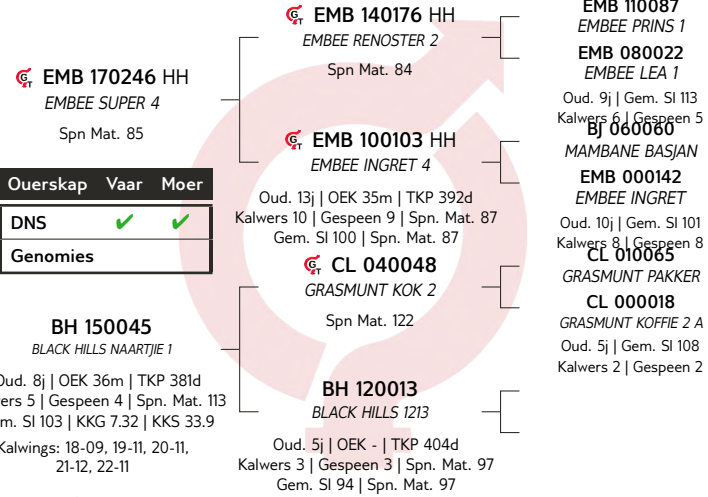


Miostatien	
Q204X	Nie Getoets
NT821	Skoon
F94L	Nie Getoets

KOEIWAARDE 81	
91	Kalfgemak Waarde
103	Kalfgroei Waarde
101	Melk Waarde
-	Onderhoudswaarde
85	Vrugbaarheidswaarde
GROEI WAARDE 97	
KARKAS WAARDE 104	
PRODUKSIE WAARDE 82	

Geb. Gewig	205D Gewig	365D Gewig	540D Gewig	GDT Indeks	VOV Indeks	Skrotum	LH
34kg	210kg 103 (25)	-	-	1381g/d 79 (24)	-	350mm (D2)	1.17

VERKOPER OPMERKINGS: Goeie bou en breë rug met balans. Moer het TKP van 381/5, Oumas het TKP van 404/3 en 377/9. Gebalanseerde teelwaardes.



Kalf en Moeder				Vrugbaarheid			
Geb. Dir.	Geb. Mat.	Spn. Dir.	Spn. Mat.	Skr. Omtr.	Vers Vrugb.	Koei Vrugb.	Lanklew.
102	78	103	101	113	-	-	107
74%	48%	70%	50%	73%			43%

Na-Speen Groei			Raam			Karkas		
Na-Speen	GDT	VOV	Volw. Gewig	Hoogte	Lengte	OSO	Vet	Mar
106	95	-	-	82	90	103	114	82
56%	64%			75%	71%	66%	60%	58%

Geb. Gewig	205D Gewig	365D Gewig	540D Gewig	GDT Indeks	VOV Indeks	Skrotum	LH
34kg	210kg 103 (25)	-	-	1381g/d 79 (24)	-	350mm (D2)	1.17

LOT 21 (M)



BH 200060
 BLACK HILLS YANKIE III



ESTD. 2009
 DRAKENSBERGER
 STOET

BLACK HILLS DRAKENSBERGERS



Potchefstroom, North West
 0832578511
 willie@blackhills.co.za

POSBUS 19792, NOORDBRUG, 2522

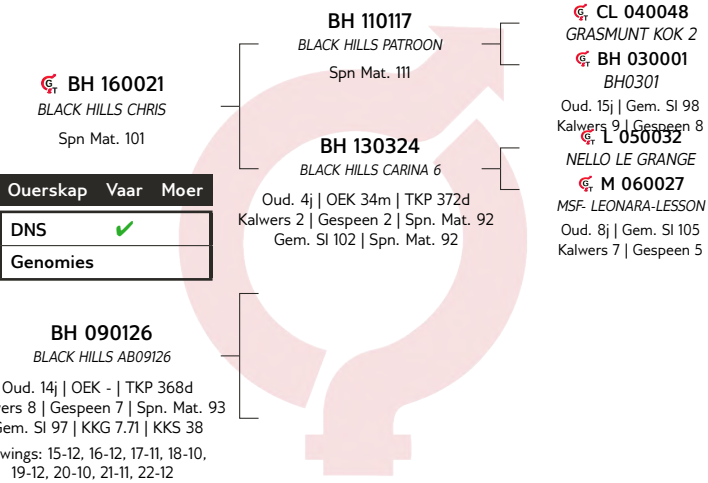


Miostatien	
Q204X	Nie Getoets
NT821	Skoon
F94L	Nie Getoets

KOEIWAARDE 75	
106	Kalfgemak Waarde
82	Kalfgroei Waarde
97	Melk Waarde
-	Onderhoudswaarde
84	Vrugbaarheidswaarde
GROEI WAARDE 78	
KARKAS WAARDE 77	
PRODUKSIE WAARDE 73	

Geb. Gewig	205D Gewig	365D Gewig	540D Gewig	GDT Indeks	VOV Indeks	Skrotum	LH
35kg	193kg 93 (25)	-	-	1619g/d 91 (24)	-	351mm (D2)	1.18

VERKOPER OPMERKINGS: Gladde, lang bul met 'n breë sterk rug. Moer het TKP van 368/8, Ouma het TKP van 372/2.



Kalf en Moeder				Vrugbaarheid			
Geb. Dir.	Geb. Mat.	Spn. Dir.	Spn. Mat.	Skr. Omtr.	Vers Vrugb.	Koei Vrugb.	Lanklew.
106	98	82	97	106	-	-	85
74%	53%	71%	51%	74%			41%

Na-Speen Groei			Raam			Karkas		
Na-Speen	GDT	VOV	Volw. Gewig	Hoogte	Lengte	OSO	Vet	Mar
78	68	-	-	79	82	98	54	109
52%	65%			75%	72%	67%	61%	60%

LOT 22 (M)



BH 200086
BLACK HILLS HANNES III



BLACK HILLS DRAKENSBERGERS



Potchefstroom, North West
0832578511
willie@blackhills.co.za

POSBUS 19792, NOORDBRUG, 2522

Herd Book	B
Birth date	2020-11-10
Age	2.9 years
Inbreeding	0%
DNA	U2823U080

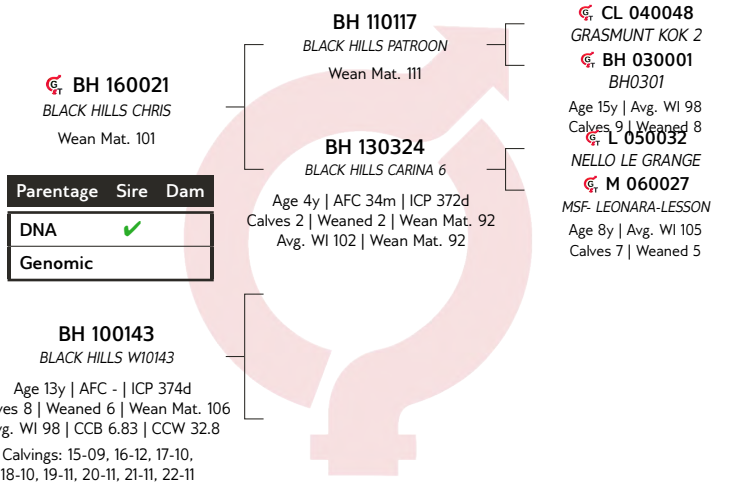
COW VALUE	81
83	Calving Ease Value
95	Calf Growth Value
103	Milk Value
-	Maintenance Value
86	Fertility Value
GROWTH VALUE	84
CARCASS VALUE	87
PRODUCTION VALUE	79



Myostatin	
Q204X	Not Tested
NT821	Free
F94L	Not Tested

Birth Weight	205D Weight	365D Weight	540D Weight	ADG Index	FCR Index	Scrotum	LH
42kg	212kg 100 (25)	-	-	1595g/d 91 (24)	-	357mm (D2)	1.19

SELLER REMARKS: Manlike bul met goeie skof. Moer het TKP van 374/8, Ouma het TKP van 372/2.



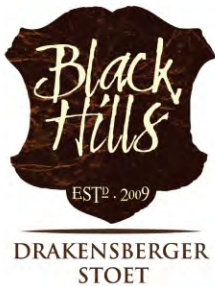
Calf and Mother				Fertility			
Birth Dir.	Birth Mat.	Wean Dir.	Wean Mat.	Scr. Circ.	Heifer Fert.	Cow Fert.	Longev.
89	87	95	103	117	-	-	91
74%	54%	71%	51%	73%	-	-	42%

Post-Wean Growth			Frame			Carcass		
Post Wean	ADG	FCR	Mature Weight	Height	Length	EMA	Fat	Mar
92	77	-	-	80	89	95	60	129
54%	64%	-	-	75%	72%	67%	61%	60%

LOT 23 (M)



BH 200080
BLACK HILLS KATROL



BLACK HILLS DRAKENSBERGERS



Potchefstroom, North West
0832578511
willie@blackhills.co.za

POSBUS 19792, NOORDBRUG, 2522

Herd Book	SP
Birth date	2020-11-07
Age	2.9 years
Inbreeding	8%
DNA	U2823U077

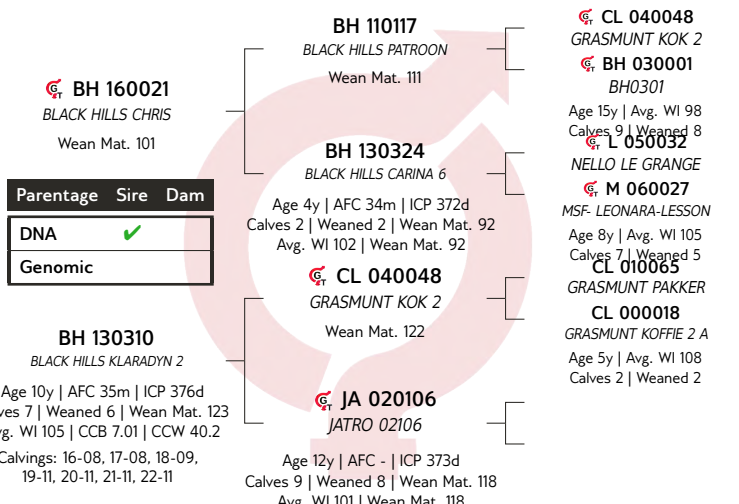
COW VALUE	72
85	Calving Ease Value
97	Calf Growth Value
114	Milk Value
-	Maintenance Value
65	Fertility Value
GROWTH VALUE	110
CARCASS VALUE	103
PRODUCTION VALUE	78



Myostatin	
Q204X	Not Tested
NT821	Free
F94L	Not Tested

Birth Weight	205D Weight	365D Weight	540D Weight	ADG Index	FCR Index	Scrotum	LH
41kg	210kg 99 (25)	-	-	1786g/d 102 (24)	-	386mm (D2)	1.21

SELLER REMARKS: Manlike bul met goeie kapasiteit, rug en sak. Moer het TKP van 376/7, Oumas het TKP van 372/2 en 373/9. Baie goeie en gebalanseerde teelwaardes.



Calf and Mother				Fertility			
Birth Dir.	Birth Mat.	Wean Dir.	Wean Mat.	Scr. Circ.	Heifer Fert.	Cow Fert.	Longev.
92	85	97	114	145	78	-	90
76%	56%	73%	52%	75%	42%	-	48%

Post-Wean Growth			Frame			Carcass		
Post Wean	ADG	FCR	Mature Weight	Height	Length	EMA	Fat	Mar
101	109	-	-	93	104	114	61	134
60%	67%	-	-	76%	73%	69%	64%	62%

LOT 24 (M)



BH 200036 HH

BLACK HILLS ANKER II

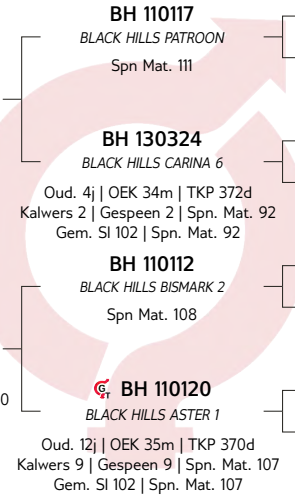


Kuddeboek	SP
Geb. dtm	2020-09-28
Oud.	3 jaar
Inteling	6%
DNS	U2823U034

BH 160021
 BLACK HILLS CHRIS
 Spn Mat. 101

Ouerskap	Vaar	Moer
DNS	✓	✓
Genomies		

BH 140402
 BLACK HILLS ASTER A1
 Oud. 9j | OEK 36m | TKP 380d
 Kalwers 6 | Gespeen 6 | Spn. Mat. 110
 Gem. SI 97 | KKG 6.74 | KKS 44.2
 Kalwings: 17-08, 18-09, 19-10,
 20-09, 21-10, 22-11



BH 110117
 BLACK HILLS PATROON
 Spn Mat. 111

BH 130324
 BLACK HILLS CARINA 6
 Oud. 4j | OEK 34m | TKP 372d
 Kalwers 2 | Gespeen 2 | Spn. Mat. 92
 Gem. SI 102 | Spn. Mat. 92

BH 110112
 BLACK HILLS BISMARCK 2
 Spn Mat. 108

BH 110120
 BLACK HILLS ASTER 1
 Oud. 12j | OEK 35m | TKP 370d
 Kalwers 9 | Gespeen 9 | Spn. Mat. 107
 Gem. SI 102 | Spn. Mat. 107

CL 040048
 GRASMUNT KOK 2

BH 030001
 BH0301
 Oud. 15j | Gem. SI 98
 Kalwers 9 | Gespeen 8

L 050032
 NELLO LE GRANGE

M 060027
 MSF-LEONARA-LESSON
 Oud. 8j | Gem. SI 105
 Kalwers 7 | Gespeen 5

CL 040048
 GRASMUNT KOK 2

CL 040051
 GRASMUNT RIETA 3
 Oud. 14j | Gem. SI 99
 Kalwers 11 | Gespeen 9

JA 080014
 JATRO JA080014

BH 020001
 BH020001
 Oud. 14j | Gem. SI 95
 Kalwers 6 | Gespeen 6

BLACK HILLS DRAKENSBERGERS

Potchefstroom, North
 West
 0832578511
 willie@blackhills.co.za
 POSBUS 19792, NOORDBRUG, 2522

KOEIWAARDE	109
122	Kalfgemak Waarde
95	Kalfgroei Waarde
104	Melk Waarde
114	Onderhoudswaarde
93	Vrugbaarheidswaarde

GROEI WAARDE	105
KARKAS WAARDE	103
PRODUKSIE WAARDE	108

LOGIX
 GENETIC SENTINEL
 Genomiese Teelwaarde
 Analise 2023-08-19

Kalf en Moeder				Vrugbaarheid			
Geb. Dir.	Geb. Mat.	Spn. Dir.	Spn. Mat.	Skr. Omtr.	Vers Vrugb.	Koei Vrugb.	Lanklew.
123	101	95	104	121	93	93	104
78%	62%	76%	60%	78%	54%	48%	58%

Na-Speen Groei			Raam			Karkas		
Na-Speen	GDT	VOV	Volw. Gewig	Hoogte	Lengte	OSO	Vet	Mar
98	108	104	88	96	106	111	62	94
66%	72%	47%	52%	79%	77%	73%	69%	69%

Miostatien

Q204X	Skoon
NT821	Skoon
F94L	Skoon

Geb. Gewig	205D Gewig	365D Gewig	540D Gewig	GDT Indeks	VOV Indeks	Skrotum	LH
32kg	207kg 103 (25)	-	-	1905g/d 108 (24)	-	343mm (D2)	1.22



VERKOPER OPMERKINGS: Bul met goeie kapasiteit en 'n skoon onderlyn. 'n Lengte hoogte verhouding van 1.22. Moer het TKP van 380/6, Oumas het TKP van 372/2 en 370/9. Bul het goeie gebalanseerde teelwaardes. In kommersiële kudde gebruik.



BLACK HILLS PRODUKSIE VEILING
STANDERTON 27 September 2023



Dier Info				Actual Values							Expected Breeding Values								Indices			Dam				
LOT	Animal ID	Sex	SEC	Birth Wt (kg)	205d Wt (kg)	CCB Ratio	CCW Ratio	Length Height Ratio	Scr. Circ. (mm)	Birth Dir (kg)	Birth Mat (kg)	Wean Dir (kg)	Wean Mat (kg)	Post Wean (kg)	Mature Weight. (kg)	ADG (g/d)	FCR (kg:kg)	Scr. Circ. (mm)	Height. (mm)	Length (mm)	Wean	ADG	Scr. Circ.	Avg. Wean Index	Nr. Calves	Repr. Index
Breed Average Auction Average				36	214	7.40	41.0	1.18	339	0.12	0.09	6.7	3.5	13	8	38	-33	8.3	-6	3	103	99	116	101	6.0	110
1	BH 200079	M	B	24	194	6.8	36.5	1.17		-3.28	-0.21	-2.7	4.5	1.2	9.5	19	-36	-9.9	-9	-10	106	98	63	103	2	117
2	BH 200021	M	SP	36	202	8.02	40.5	1.19		-0.90	-0.50	1.5	3.9	5.8	8.2	-17	-14	5.8	-27	-22	92	99	95	97	3	106
3	BH 200033	M	SP	37	237	7.37	44.6	1.21		-0.37	0.13	10.8	2.4	16.9	18.5	-1	-9	13.4	-13	-0	111	93	110	102	9	111
4	BH 200082	M	SP	34	225	7.64	44.4	1.03		-1.79	-0.60	1.8	3.0	7.4	2.8	10	-49	12.8	-14	-26	112	94	109	103	9	112
5	BH 190045	M	SP	33	237	7.4	53.4	1.20		-1.36	0.08	9.5	2.0	23.7	16.5	163	-89	23.7	15	27	104	117	131	102	9	110
6	BH 200012	M	B	38	178	6.86	33.7	1.21		0.17	0.94	3.3	8.5	10.0	15.3	9	-20	12.4	-9	2	100	92	108	106	8	116
7	BH 200110	M	B	39	219	7.28	35.6	1.21		0.08	0.17	3.7	5.0	10.4	2.9	42	-21	29.9	2	15	106	103	144	101	7	113
8	BH 200042	M	B	37	213	7.99	47.2	1.21		-0.42	-0.25	0.9	3.1	3.6	-3.5	-39	11	13.8	-12	-1	103	90	111	102	8	115
9	BH 190063	M	SP	38	227	7.97	46	1.20		1.09	1.36	14.5	7.8	29.2	18.8	152	-76	26.1	18	30	104	115	136	101	5	105
10	BH 200067	M	SP	39	216	9.7	44.6	1.20		-0.36	0.11	4.6	5.1	12.4	-10.0	42	-17	19.1	4	21	98	98	122	98	2	97
11	BH 200031	M	A	-	-	-	-	1.18		-0.34	-0.11	2.0	5.6	7.7	-2.2	31	-26	12	-4	2	-	95	107			-
13	BH 200047	M	SP	39	232	8.92	48.3	1.17		1.24	0.19	15.1	2.3	26.3	14.6	77	-36	19.2	10	23	107	100	122	93	3	101
14	BH 200096	M	SP	35	199	6.41	33.9	1.19		-0.53	0.88	2.4	6.0	10.5	4.3	-4	-7	12	-4	8	96	100	108	101	6	108
15	BH 200002	M	SP	31	194	7.11	46.9	1.18		-2.19	0.23	-1.4	8.3	5.0	0.8	36	-30	19.4	-9	-6	96	105	122	104	5	104
16	BH 200106	M	B	39	243	6.79	37	1.16		0.17	0.47	7.7	8.2	18.0	10.0	70	-44	24.3	3	13	120	112	132	112	5	111
17	BH 200070	M	B	32	215	5.82	39.8	1.19		-1.24	0.70	1.7	9.2	10.6	8.9	33	-26	30.1	-5	6	107	101	144	105	6	113
18	BH 200084	M	B	38	218	7.01	36.2	1.19		-0.06	0.40	7.3	5.0	15.9	17.3	38	-29	1.9	-11	1	106	96	87	103	4	103
19	BH 200073	M	B	33	216	7.19	39.2	1.19		-1.54	-0.34	4.6	2.2	11.2	1.6	18	-23	12.3	-26	-14	101	102	108	97	2	125
20	BH 200078	M	SP	34	210	6.2	34.4	1.17		-0.09	1.06	8.3	3.8	19.3	22.1	23	-22	14.9	-12	-3	103	79	113	103	5	104
21	BH 200060	M	B	35	193	7.83	40.8	1.18		-0.53	0.18	-1.9	2.6	-2.1	0.2	-67	25	11.2	-14	-9	93	91	106	97	8	115
22	BH 200086	M	B	42	212	7.02	31.5	1.19		1.24	0.68	4.4	4.5	8.9	4.6	-40	14	16.5	-14	-4	100	91	117	98	8	114
23	BH 200080	M	SP	41	210	8.28	37	1.21		0.94	0.75	5.3	8.2	16.1	13.9	69	-33	30.4	-6	10	99	102	145	105	7	108
24	BH 200036	M	SP	32	207	7.22	50.1	1.22		-2.21	0.05	4.3	4.6	13.7	-2.7	66	-39	18.9	-4	12	103	108	121	97	6	106

EXPLANATION OF CATALOGUE ABBREVIATIONS
VERDUIDELIKING VAN KATALOGUS AFKORTINGS

Lot Number	LOT	LOT	Lot Nommer
Estimated breeding value	EBV	EBV	Beraamde teelwaarde
Parentage verification	Parentage	Ouerskap	Ouerskap verifikasie
Age in years	AGE	OU.D.	Ouderdom in jaar
Age at First Calving	AFC	OEK	Ouderdom met Eerst Kalwing
Intercalving Period	ICP	TKP	Tussen-Kalf Periode
Number of calvings	Calvings	Kalwings	Aantal kalwings
Number of calves weaned	Weaned	Gespeen	Aantal kalwers gespeen
Average Wean index	Avg. WI	Gem. SI	Gemiddelde speen indeks
Animal identification number	ID	ID	Dier se identifikasie nommer
Herd Book Section	SEC	AFD	Kuddeboek Afdeling
Herd Book Section: Pending Registration	PEN	PEN	Kuddeboek Afdeling: Wag vir Registrasie
Herd Book Section: Not for Registration	NFR	NFR	Kuddeboek Afdeling: Nie vir Registrasie
Herd Book Section: Foundation Generation	FO	FO	Kuddeboek Afdeling: Fondasie Generasie
Herd Book Section: Appendix A	A	A	Kuddeboek Afdeling: Aanhangsel A
Herd Book Section: Appendix B	B	B	Kuddeboek Afdeling: Aanhangsel B
Herd Book Section: Studbook Proper, a registered animal	SP	SP	Kuddeboek Afdeling: Studbook Proper, 'n geregistreerde dier
Genomically Tested	GT	GT	Genomies Getoets
Homozygous Horned (Celtic test)	HH(c)	HH(c)	Homosigoties horings (Celtic toets)
Homozygous Polled (Celtic test)	PP(c)	PP(c)	Homosigoties Poena (Celtic toets)
Heterozygous Polled (Celtic test)	Pp(c)	Pp(c)	Heterosigoties Poena (Celtic toets)
Phenotypically Polled	P	P	Fenotopies Poena
Birth Direct breeding value	Birth Dir.	Geb. Dir	Geboorte Direk teelwaarde
Wean Direct breeding value	Wean Dir.	Spn. Dir.	Speen Direk teelwaarde
Wean Maternal breeding value	Wean Mat.	SPn. Mat.	Speen Maternaal teelwaarde
Scrotal Circumference	Scr. Circ.	Skr. Omt.	Skrotum omtrek
Heifer Fertility	Heifer Fert.	Vers Vrugb.	Vers Vrugbaarheid
Cow Fertility	Cow Fert.	Koei Vrugb.	Koei Vrugbaarheid
Longevity	Longev.	Lankl.	Lanklewendheid
Mature Weight	Mat. Wt.	Volw. Gewig	Volwasse gewig
Average Daily Gain (g/day)	ADG	GDT	Gemiddelde Daaglikse Toename
Feed Conversion Ratio (kg:kg)	FCR	VOV	Voeromset Verhouding
Eye Muscle Area	EMA	OSO	Oogspier grootte
Backfat Thickness	Fat	Vet	Rugvet Diepte
Marbeling (intra-muscular fat)	Mar	Mar	Marmering (binne-spiersse vet)
Actual Birth weight	Birth Wt.	Geb. gewig	Werklike Geboorte gewig
205-day Dam-age corrected weight	205d Wt.	205d gewig	205-dag Moeder-ouderdom gekorrigeerde gewig
365-day weight index	365D Index	365D Indeks	365-dae gewig indeks
540-day weight index	540D Index	540D Indeks	540-dae gewig indeks
Length-Height ratio	LH	LH	Lengte-Hoogte Verhouding
Cow-Calf Birth Ratio	CCG	KKG	Koei-Kalf Geboorte Verhouding
Cow-Calf Wean Ratio	CCW	KKS	Koei-Kalf Speen Verhouding
Average Weaning Index	Avg. WI	Gem. SI	Gemiddelde speen indeks
Number of Calves	Nr. Calves	Aant. Kalw.	Aantal kalwers
Reproduction Index	Repr. Index	Repr. Indeks	Reproduksie indeks
Animal sex: M - Male, F - Female	M / F	M / V	Dier geslag: M - Manlik, V - Vroulik